



# HEALTH PROOF HELSINKI

## & EKOSYSTEEMIIYHTEISTYÖ

**Eija Raussi-Lehto**

Research and Development Manager  
D.Sc. (Tech.), MSc (Health Care), RN-Midwife

Metropolia University of Applied Sciences

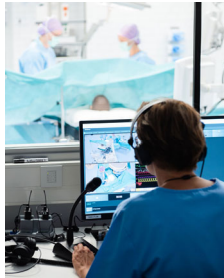
[Eija.raussi-lehto@metropolia.fi](mailto:Eija.raussi-lehto@metropolia.fi)



At the end of the project,  
we issue a certificate of co-operation.

# TESTING ENVIRONMENTS AND EXPERT SERVICES FOR HEALTHTECH AND MEDTECH COMPANIES

## ECOSYSTEM MEMBERS



[Metropolia Proof Health](#)  
Metropolia UAS



[Testbed Helsinki](#)  
City of Helsinki



[HUS Testbed](#)  
Helsinki University Hospital



HEALTH  
PROOF  
HELSINKI

**Metropolia's pre-clinical testing,  
validation and verification services**

- State of the art simulation facilities
  - Teachers, researchers and students' efforts
  - AI, XR, 5G, IOT and automation experts
- 

**Helsinki city's testbed services  
for primary and social care**

- Primary care and social services professionals' expertise
  - Real-life testing environments
- 

**Helsinki University Hospital's  
specialised care and  
diagnostics testbed services**

- HUS focuses on healthcare digitalisation: HUS EHR Apotti, HUS Data Lake, HUS Acomedic secure cloud service
- Specialised healthcare professionals and researchers' expertise

## MULTIDISCIPLINARY SERVICES OF UNIVERSITY OF APPLIED SCIENCES



OPTOMETRY



OSTEOPATHY



DENTAL HYGIENE



PODIATRY



PHYSIOTHERAPY



MOVEMENT  
LABORATORY



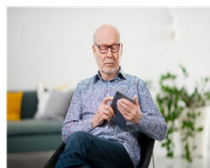
ORTHOTICS AND  
PROSTHETICS



OCCUPATIONAL  
THERAPY



FAMILY SERVICES



ELDERLY CARE



GUIDED GROUP  
ACTIVITIES



LOW THRESHOLD  
COUNSELLING & GUIDANCE

**Simulation** environments “from home to hospital”

Testing services in authentic home- and hospital environment simulation rooms

### **Movement laboratory**

3D, 2D -movement analysis, gait and running analysis, isokinetic dynamometer measurements, respiratory gas analyzers

### **XR-Services**

Extended reality consultation, proof-of-concept-implementation and workshops



- Smooth access for healthtech and medtech companies to ecosystem expertise, facilities and equipment at various stages of the product/service development through a unified customer journey



# THE PROCESS





*Your Partner in Healthtech and Medtech*

<https://www.healthproofhelsinki.fi/>





**HEALTH  
PROOF  
HELSINKI**